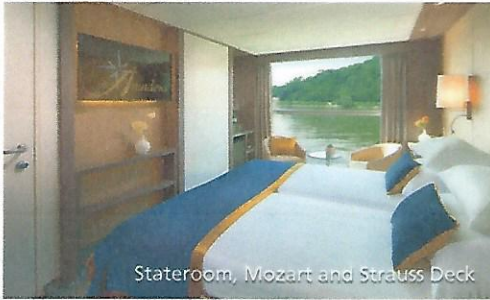


# AMADEUS SILVER III



Stateroom, Mozart and Strauss Deck



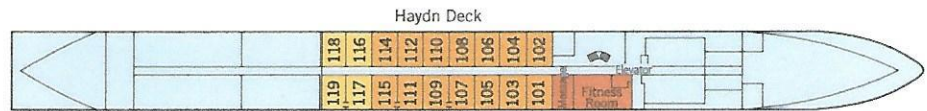
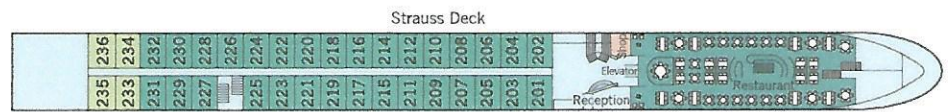
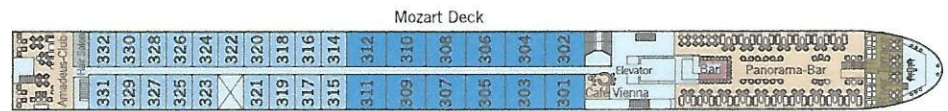
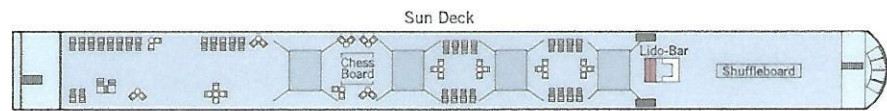
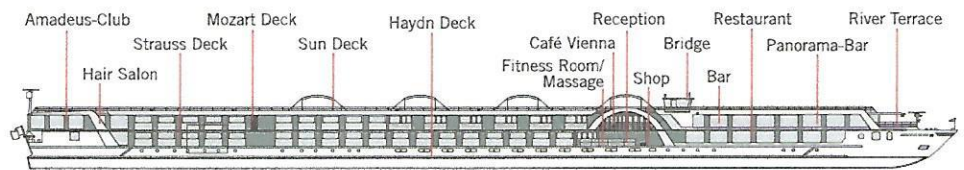
Panorama-Bar and Lounge



Suite, Mozart Deck

## ONBOARD FACILITIES

- Panorama-Restaurant
- Panorama-Bar und Lounge
- Amadeus-Club
- "Café Vienna" with Viennese coffee specialities
- Outdoor glass-shielded "River Terrace"
- Sun Deck with Lido-Bar, lounge chairs, shade awnings, giant Chess Board and Shuffleboard
- Fitness Room
- Hair Salon, Massage Room
- Gift Shop
- Laundry Service
- Complimentary bicycles onboard
- Wi-Fi available
- Elevator

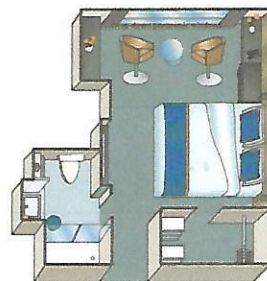


## STATEROOM AMENITIES

- Suites (26,4 m<sup>2</sup>/284 sq.ft.) with comfortable corner sofa, luxurious bathroom and walk-out exterior balcony
- Staterooms (17,5 m<sup>2</sup>/188 sq.ft.) on Strauss and Mozart Deck with drop-down panoramic windows
- Staterooms (16 m<sup>2</sup>/172 sq.ft.) on Haydn Deck with smaller panoramic windows (cannot be opened)
- Cabins with connecting doors are available on Haydn Deck on request
- Mini-Bar (all staterooms except categories C-1 and C-4)
- Walk-in wardrobe
- Choice of bed configuration: double or twin bed
- Flat-screen television
- Individual climate control
- En-suite bathrooms with shower/WC
- Bathrobe in Suites
- Hair dryer
- Direct dial telephone
- In-room safe



Suite



Staterooms, Mozart and Strauss Deck

## TECHNICAL DATA

- Built: 2016
- Registry: Germany
- Length: 135 m | 443 feet
- Width: 11,4 m | 37,5 feet
- Draft: 1,45 m | 5 feet
- Height above water: 6 m | 19,8 feet
- Speed: 25 km/h | 15,5 mph
- Decks: 4
- Staterooms/Suites: 72/12
- Max. passengers: 168
- Crew members: approx. 46